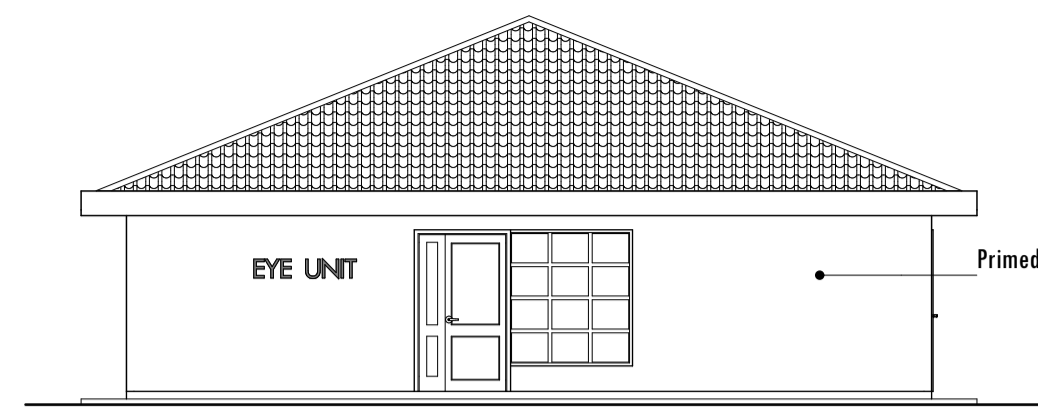
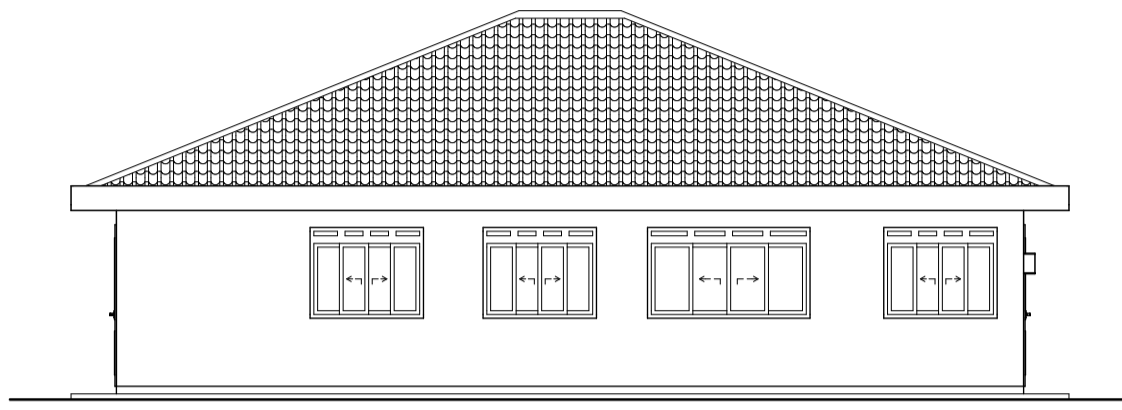




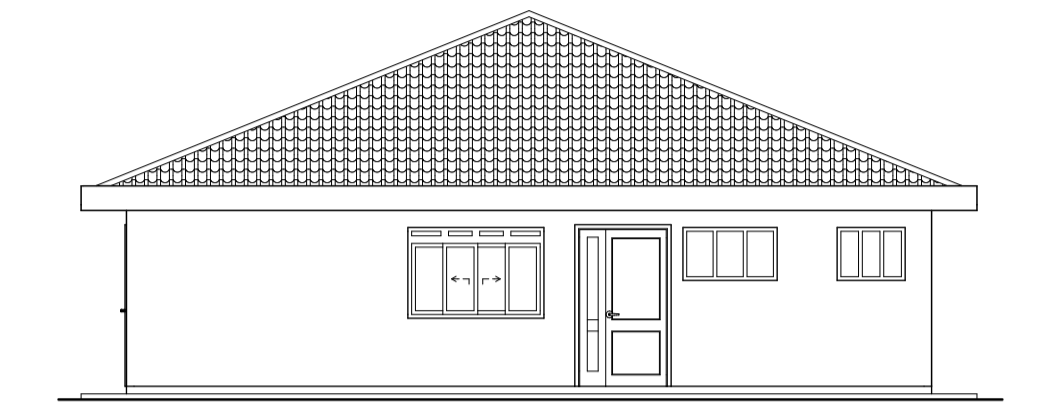
Elevation 001 1:100



Elevation 003 1:100



Elevation 002 1:100



Elevation 004 1:100

S-01

section S01---S01

1:75

Prepainted G28 IT4 sheets as eave ceiling lining screwed to 25x25x2mm SHS steel bearers.  
 Aluminium and laminated MDF partition.  
 600x600x50mm PCC paving slabs on compacted murrum base and sand bedding.

200mm masonry foundation wall.  
 600x200mm RC strip footing.

Gypsum ceiling lining screwed to light gauge galvanised steel bearers.

Roof pitch 22°

Prepainted matt finish-elegantile roof covering screwed to galvanised light gauge battens/100x50mm steel z-purlins

50x50x3mm SHS steel rafter welded to struts and ties

25x25x2mm SHS steel struts welded to rafters and ties

25x25x3mm SHS steel ties welded to struts

Gypsum ceiling lining screwed to light gauge galvanised steel bearers.

225x200mm, 2mm thick GI sheet, formed gutter, primed and painted.

75mm diameter H/G pvc down pipe.

All windows: Glazed aluminium, Sliding.

Corrugated Steel Shipping container exterior wall, with interior chipboard/gypsum board lining, skim coated and painted.

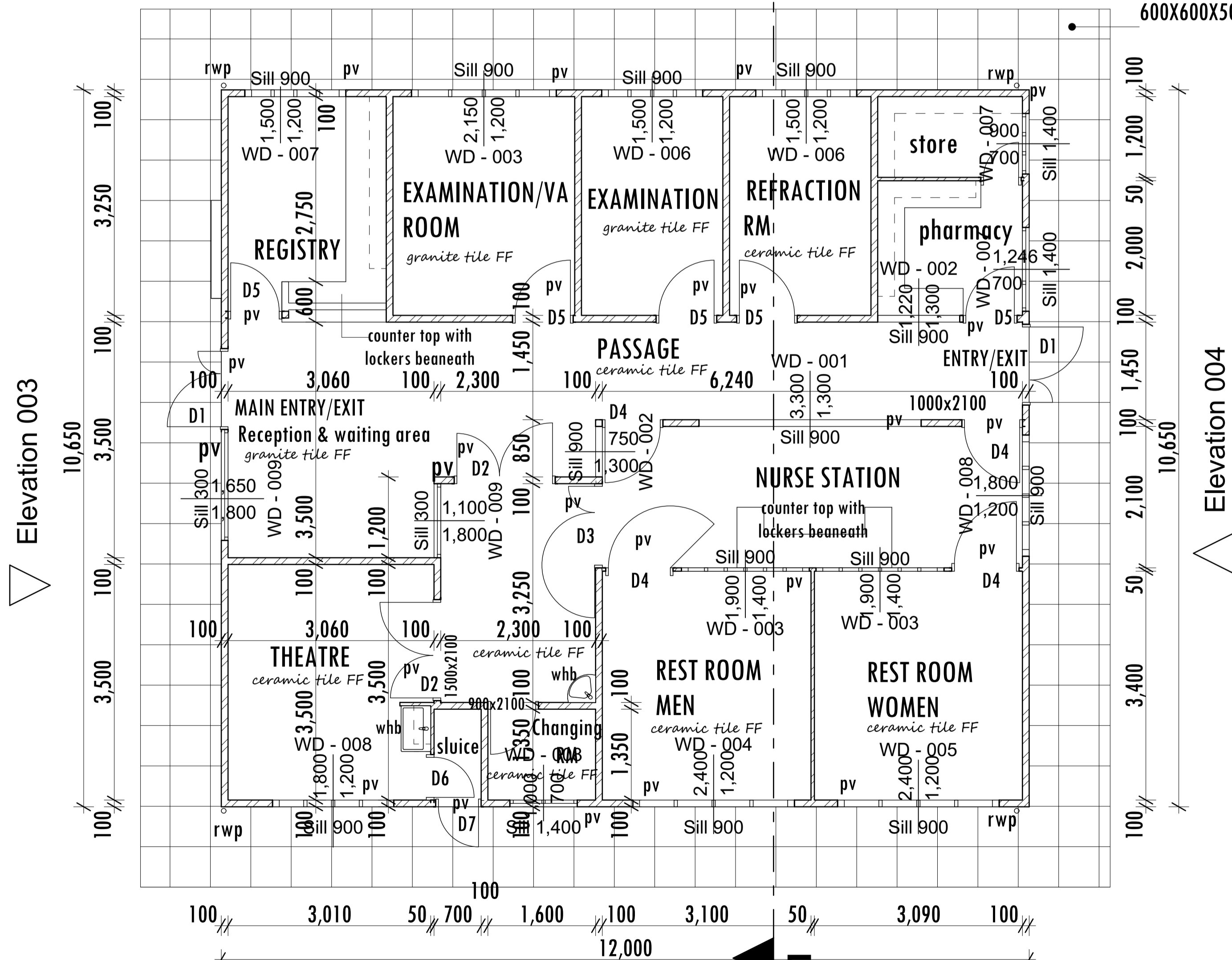
Determine depth on site

100mm thick concrete slab (Mix 1:2:4) with BRC mesh reinforcement on 500 gauge DPM on 50mm murrum compacted and treated with 'gladiator', insecticide on 250mm stone hardcore.

Elevation 002

S-01

600X600X50mm PCC paving slabs.



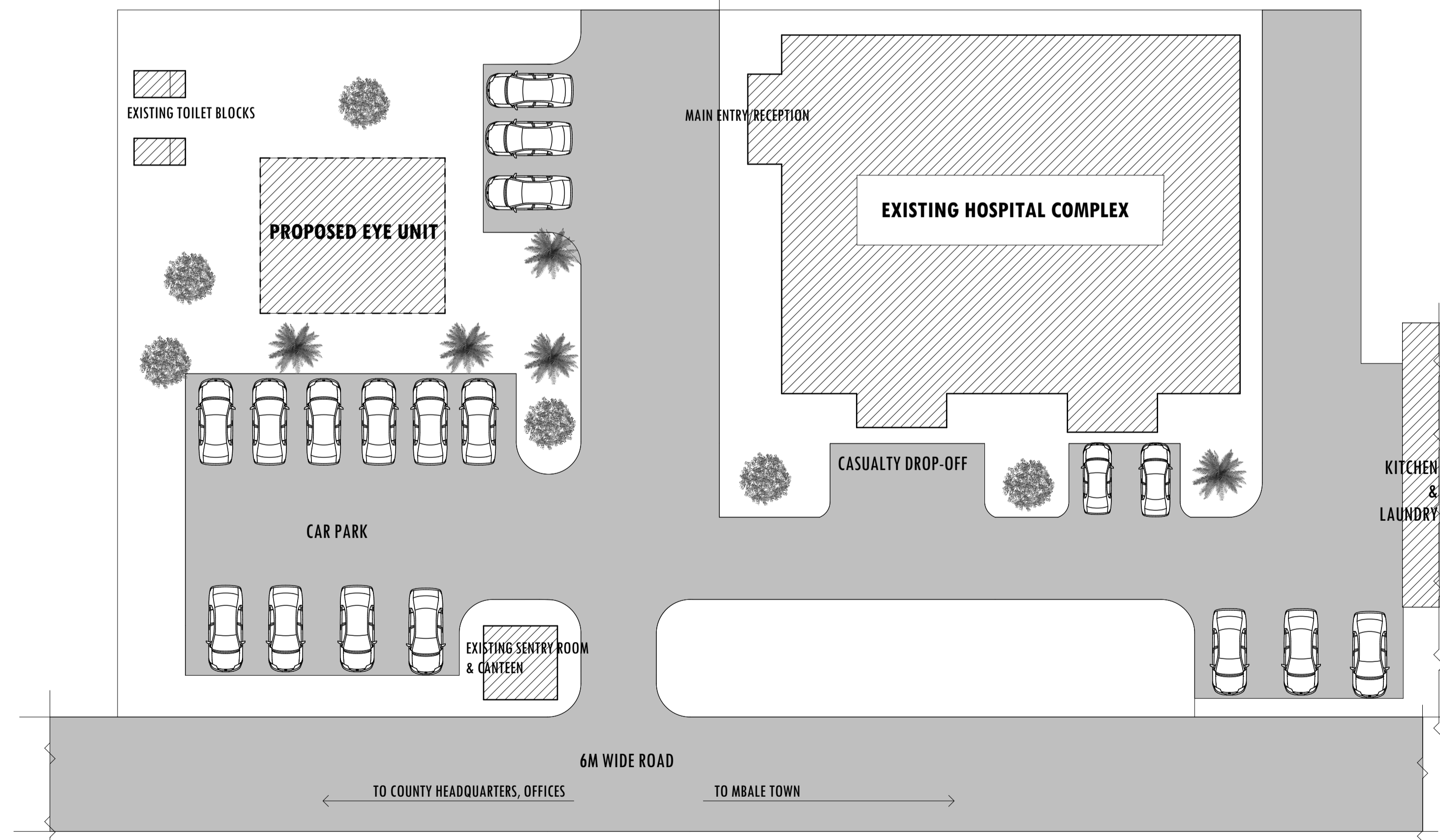
Elevation 001

Floor Plan

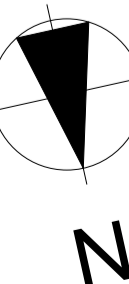
1:50

DOOR SCHEDULE

Door Mark	Unit Size: Lengthx Height	Unit Size
D1	1200x2100mm	Glazed Steel casement, Double leaf-Ordinary clear glass
D2	1500x2100mm	Glazed Steel casement, Double leaf-Frosted glass
D3	1250x2100mm	Glazed Aluminium casement, Double leaf-Frosted glass
D4	1000x2100mm	Glazed Aluminium casement, Single leaf-Frosted glass
D5	900x2100mm	Wooden, Single leaf, Flush-Solid Core
D6	675x2100mm	Wooden, Single leaf, Flush-Solid Core
D7	675x2100mm	Steel panel-Partly Louvred, single leaf



SITE PLAN



DRW NO:

DRAWING TITLE:  
**ARCHITECTURAL WORKING DRAWING:**  
 FLOOR PLANS, SECTIONS, ELEVATIONS,  
 LOCATION PLAN.

APPROVED:

ARCHITECT:  
 P.A. OKALALO  
 P.O. BOX 129-50300, MURAGOLI  
 E-Mail: okrstud101@gmail.com

DEPARTMENT OF HEALTH  
 VIHIGA COUNTY GOVERNMENT

PROJECT: PROPOSED EYE UNIT AT VIHIGA COUNTY REFERRAL HOSPITAL  
 (SHIPPING CONTAINER PREFAB)  
 M'BALE- VIHIGA COUNTY